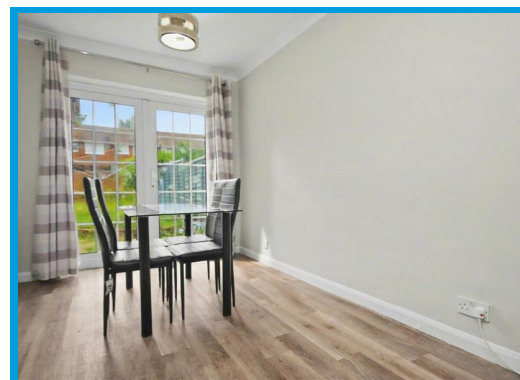
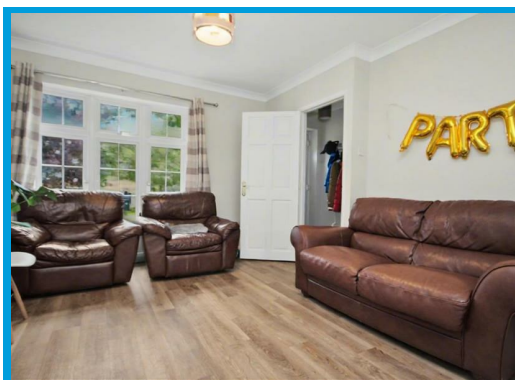
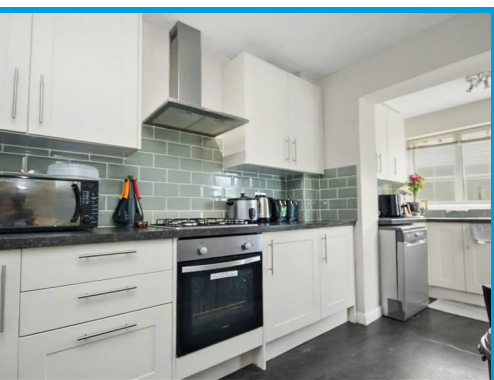




Oakfields, Guildford, Surrey GU3 3AS

£2,000 PCM

**\*\*FULLY REFURBISHED\*\*** Located in a quiet residential location within easy access of Royal Surrey Hospital and Surrey University, this three bedroom house boasts well presented accommodation and features a garage and enclosed garden.



# Description

A three bedroom house positioned in a quiet residential location.  
The ground floor comprises an entrance hall leading to a large kitchen/ diner with doors to the garden and a recently fitted kitchen with appliances.  
Upstairs the house has three bedrooms and a bathroom with a shower.  
Further features include a garden with patio area, parking and a garage.  
The property is within easy access of the A3, Royal Surrey Hospital & Surrey Research Park.

